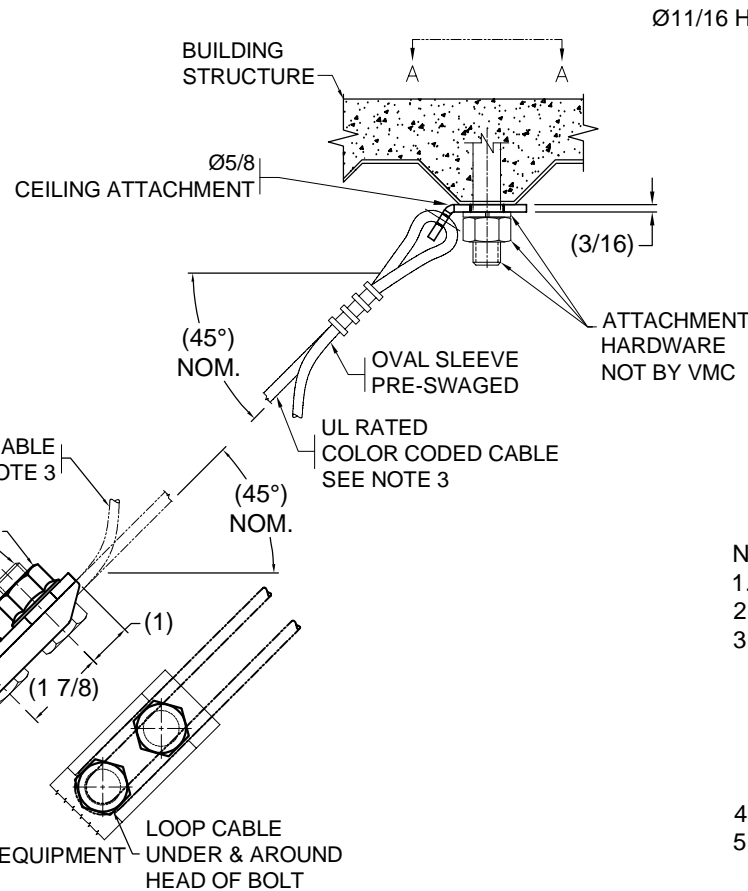


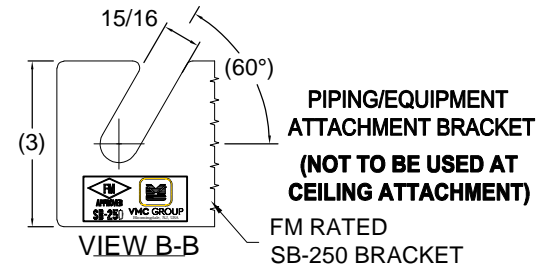
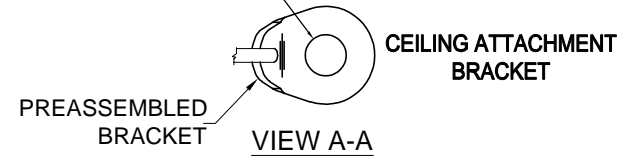
REV.	DESCRIPTION	DATE	BY

KIT PART NUMBER	CABLE LENGTH (FT.)	CABLE COLOR	MAX. TENSION ALLOWABLE (LBS.)	KIT TYPE
SB-250-LRC-510	10	GREEN	2667 OR 2184	15/16" SLOT / 11/16" ANCHOR BRACKET
SB-250-LRC-507	7	GREEN	2667 OR 2184	15/16" SLOT / 11/16" ANCHOR BRACKET

A. RATING AT 45° FOR STEEL ATTACHMENT (LRFD) - 2667#
 B. RATING AT 45° FOR CONCRETE ATTACHMENT- 5/8" HILTI TZ @3-1/8" EMBEDMENT, 5" SLAB MIN - 2184#



Ø11/16 HOLE FOR ANCHOR TYP.



NOTES:

- BRACKET MATERIAL: COLD ROLLED STEEL
- HARDWARE & BRACKETS ELECTRO ZINC PLATED
- EACH KIT CONSISTS OF:
 QTY (2) 3/16" GREEN CABLE W/ BRACKET PRE-SWAGED,
 QTY (2) SB-250 Ø15/16" SLOTTED BRACKETS WITH EACH BRACKET ASSEMBLY COMPRISED OF (2) 3/4" BOLTS & (2) 3/4" SERRATED LOCK NUTS.
- FIELD TORQUE 3/4" LOCK NUTS TO 50 FT-LBS.
- FM APPROVAL APPLIES ONLY TO INSTALLATIONS USING STRUT OR ANGLE.

OTHER MATERIALS, COMPOUNDS, OR FINISHES WITH EQUAL OR SUPERIOR PROPERTIES MAY BE SUBSTITUTED AS THEY BECOME AVAILABLE.



CERTIFIED FOR:

JOB NAME: _____
 CUSTOMER: _____
 CUSTOMER P.O.: _____
 SALES ORDER: _____

**MODEL SB-250-LRC 2667 LBS.
 3/16 INCH GREEN SEISMIC CABLE
 RESTRAINT KIT**



VMC GROUP
 THE POWER OF TOGETHER™
 Bloomington, NJ 07403
 Houston, TX 77041

SCALE:	NONE	Member VISCMA
SHEET:		
DRAWING NO.:		REVISION